

Emergency Management

WEEKLY NEWSLETTER

EOC News

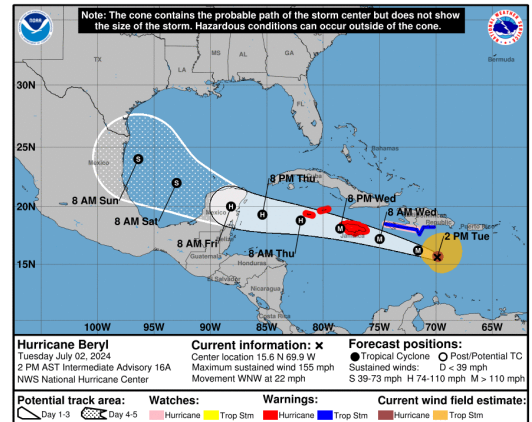
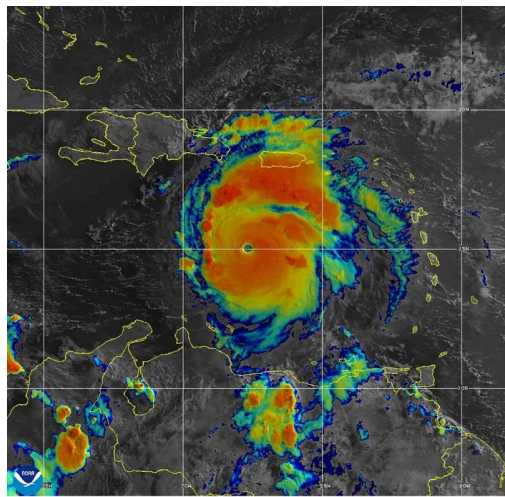
JULY 2ND, 2024

The Hurricane Season: Busy and Bustling!

At present, we find ourselves 32 days into the hurricane season, having encountered three named storms already. Notably, Hurricane Beryl, the most recent development, has escalated to a Category 5, marking it as the season's first major hurricane. Currently advancing through the central Caribbean Sea, Hurricane Beryl is projected to approach Jamaica by Wednesday and the Cayman Islands by Thursday. According to the most recent forecast, Florida is currently not projected to face direct consequences from the storm; however, this could be subject to change. The forecast indicates an upcoming season of heightened activity. It is imperative for the residents of our county to prepare for the potential impact of tropical storms or hurricanes.

Residents should tailor their emergency plans to specific needs, including varied evacuation strategies for children, pets, and medical equipment. Establish clear communication protocols, schedule regular drills, and ensure all family members understand their roles. Keep informed about local alerts to formulate a comprehensive and effective emergency plan. It is important to note that some evacuation sites may not allow pets. Just as you prepare a plan for yourself and your family, it is equally vital to make arrangements for your animals. Ensure you have documentation proving ownership of your pet, such as a microchip or a photo of you and your pet together. This precaution will assist in the process of reuniting with your pet should separation occur.

Additionally, it is crucial to assemble an emergency kit that includes essentials such as non-perishable food, water, medications, important documents, batteries, flashlights, and first aid supplies. Staying informed through reliable sources like the National Weather Service and local authorities can provide timely updates and guidance.



Notably, our county does not have a designated tropical weather shelter. Therefore, it is essential for both residents and visitors to establish evacuation plans, whether that entails seeking refuge in hotels, staying with relatives or friends, or locating the nearest available tropical weather shelter. Shelters should be considered as a final option. It is advisable to seek alternative accommodations away from the storm's path if possible, as shelters are primarily intended for safety rather than comfort. Understanding and heeding evacuation orders can be lifesaving. Make sure to have a clear communication plan with family and friends, ensuring everyone knows where to go and how to stay in touch. Remember, preparedness is key to minimizing the risks and impacts of tropical storms and hurricanes. Stay safe, stay informed, and take proactive steps now to protect yourself and your loved ones.

Emergency Management Staff, Volunteers, & Stakeholders

Shining a spotlight on the people who make this agency function.



This period represents a peak season for Franklin County's Solid Waste, Parks & Recreation, and Animal Control departments, serving as valuable assets to our community. In times of storms, Director Fonda Davis and the team promptly engage in debris elimination efforts, offering essential equipment for the recovery phase. Their contributions extend to waste management during Blue Skies, ensuring the upkeep of our parks, facilities, and beach flag systems. Their readiness to provide assistance is commendable and greatly valued by our community.

Raging waves

Storm surge, an abnormal elevation of water caused by a storm, surpasses the anticipated astronomical tides. This surge, when coinciding with high tide, can lead to severe coastal flooding, with storm tides reaching heights exceeding 20 feet in certain instances. The surge results from the wind's force propelling water towards the shore in a cyclonic motion, with the low pressure of intense storms playing a minor role compared to the wind-driven water. This complex phenomenon is highly susceptible to subtle variations in storm characteristics like intensity, speed, size, angle of approach, central pressure, and coastal topography.

Moreover, the destructive potential of storm surge is compounded by powerful waves that can exacerbate structural damage along the coastline. Water, with a weight of about 1,700 pounds per cubic yard, combined with persistent wave action, can dismantle structures not engineered to withstand such forces. Understanding the severity of storm surges is vital in determining evacuation strategies for our community.

Fun in the Sun: Beach Safety Edition!

Beach flags serve as vital indicators of varying tide and surf conditions that differ across locations. Numerous residents and tourists venture to different regions within the state to relish our exquisite public beaches. Discrepancies in flag colors can potentially perplex beachgoers, diminishing the effectiveness of public safety initiatives. The significance of each color is as follows:

- A purple flag denotes the sighting of dangerous marine life.
- A green flag signals low hazard, indicating tranquil conditions with a cautionary note.
- A yellow flag indicates a moderate hazard level, suggesting moderate surf and/or currents.
- A red flag signifies a high hazard level, indicating intense surf and/or strong currents.
- Double red flags symbolize the closure of the water to the public.

In the presence of perilous surf conditions, the likelihood of rip currents increases. Rip currents are vigorous, narrow water channels with swift currents prevalent along the East, Gulf, and West coasts of the U.S. Distressed swimmers often attempt to combat rip currents by swimming directly back to shore, thereby endangering themselves due to exhaustion. If ensnared in a rip current, it is advisable not to resist it. Instead, swim parallel to the shore and then proceed toward land at an angle.



See What We Are Up To



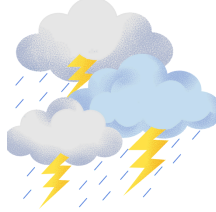
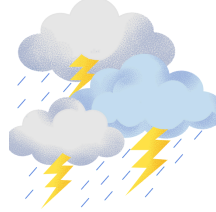
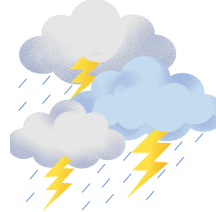
A glance at the projects that each staff member and prominent volunteer is undertaking.

- Jennifer Daniels, the Director, is diligently working on drafting a Request for Proposal (RFP) for Debris Monitoring and Debris Removal, while also updating our directories.
- Amanda Anthony, the Coordinator, remains focused on improving the user experience of the Emergency Operations Center (EOC) website and overseeing the finalization of financial reports pertaining to EOC grants.
- Jessica Lockhart, the SPN Coordinator, has started her training in her new position.
- Tim Keith-Lucas, the Operations Chief, is refining our checklists to ensure comprehensive hurricane preparedness, updating our communications plan, and applying for the CERT Grant.
- Scott Bush, the Quartermaster, is currently reorganizing the EOC trailers to accommodate a wider array of events and coordinating the organization of the Hangar.
- Judi Ring, the CERT President, is developing educational materials to raise awareness about the CERT program among the public, updating our event schedule, and applying for the CERT Grant.
- Rob Zingarelli, the Lead Radio Operator, is concentrating on the radio wiring setup within the command trailer.
- Patricia Bludworth, the Inventory Manager, is in the process of consolidating equipment from various areas within the EOC to both the command trailer and its supporting trailer.
- Allen Sanders, the Groundskeeper, has resumed grounds maintenance activities in preparation for the forthcoming summer season and is currently maintaining chainsaws.
- The team eagerly awaits the review and approval of the new building plans by the state Office of Environmental and Historic Preservation.

Upcoming Events

Event	Description	Date	Time	Location
4th of July	Holiday - EOC will be closed July 4th and 5th	July 4-5, 2024	-	-
LMS & Stakeholders Meeting	Quarterly Local Mitigation Strategy Meeting	July 17, 2024	10:00 AM	EOC 28 Airport Rd, Apalachicola

Weather Outlook

	<u>Tues, 2 July</u>	<u>Wed, 3 July</u>	<u>Thurs, 4 July</u>	<u>Fri, 5 July</u>	<u>Sat, 6 July</u>
Weather					
	Chance of Showers	Chance of Showers	Chance of Showers and Thunderstorms	Chance of Showers and Thunderstorms	Chance of Showers and Thunderstorms
Temp. (F)	78 / 88	77 / 89	78 / 90	78 / 91	80 / 91

EOC Tip of the Week

Let Us Know What You Think



Extreme Heat
Pet Edition

- Provide Shade and Water
- Limit exercise
- Keep pets indoor
- DONT leave pets in cars
- Watch for signs of overheating and heatstroke
- If its hot enough to fry an egg, it's too hot for your pet to walk on.

Address

28 Airport Road
Apalachicola, FL 32320

Phone

(850) 653-8977

Email

emfranklin@franklinemergencymanagement.com

Website

www.franklinemergencymanagement.com

Social Media

Facebook:

<https://www.facebook.com/FranklinEOC>

Office Hours

Monday - Friday
0830 - 1630

